

MNI POLITICAL RISK ANALYSIS – US COVID-19 Tracker – July 30

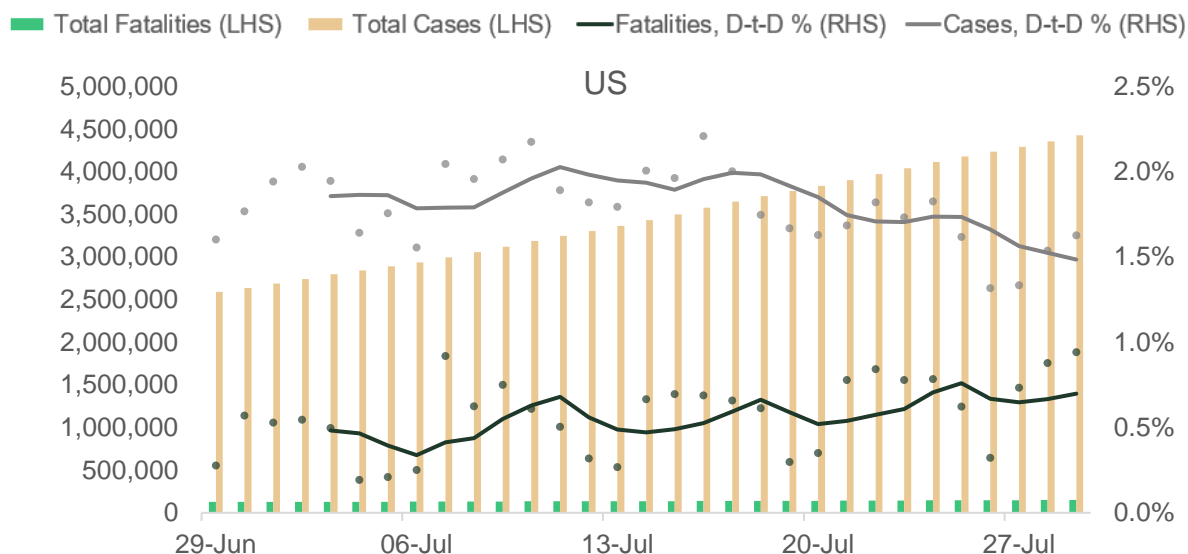
by Tom Lake

Table 1. US COVID-19 Data Table, Top 12 States for Confirmed Cases

State	Confirmed Cases	Deceased	New Cases in Last 24hrs	New Cases Higher or Lower than Previous Day's? (Today's new cases-Yesterday's New Cases)	Consecutive Days of Increase/Decrease in New Cases	Mortality Rate (per 100 recorded cases)	% Change in Cases on Previous Day	Rate of Increase in cases (7-day average)
California	484,913	8,908	14,151	Higher (+1,510)	2 (Increase)	1.8	3.0%	2.0%
Florida	451,423	6,333	9,446	Higher (+216)	2 (Increase)	1.4	2.1%	2.5%
Texas	418,995	6,193	10,502	Higher (2,345)	3 (Increase)	1.5	2.6%	2.0%
New York	413,593	32,658	715	Higher (+181)	1 (Increase)	7.9	0.2%	0.2%
New Jersey	180,600	15,798	305	Lower (-178)	1 (Decrease)	8.7	0.2%	0.3%
Georgia	178,323	3,642	3,271	Lower (-938)	1 (Decrease)	2.0	1.9%	2.2%
Illinois	176,363	7,654	1,395	Higher (+321)	1 (Increase)	4.3	0.8%	0.8%
Arizona	168,273	3,454	2,339	Higher (+232)	2 (Increase)	2.1	1.4%	1.6%
North Carolina	118,387	1,888	1,687	Lower (-97)	2 (Decrease)	1.6	1.4%	1.7%
Massachusetts	116,684	8,580	502	Higher (+246)	1 (Increase)	7.4	0.4%	0.3%
Pennsylvania	114,939	7,171	856	Lower (-232)	2 (Decrease)	6.2	0.8%	0.9%
Louisiana	112,773	3,883	1,735	Higher (+614)	1 (Increase)	3.4	1.6%	1.8%

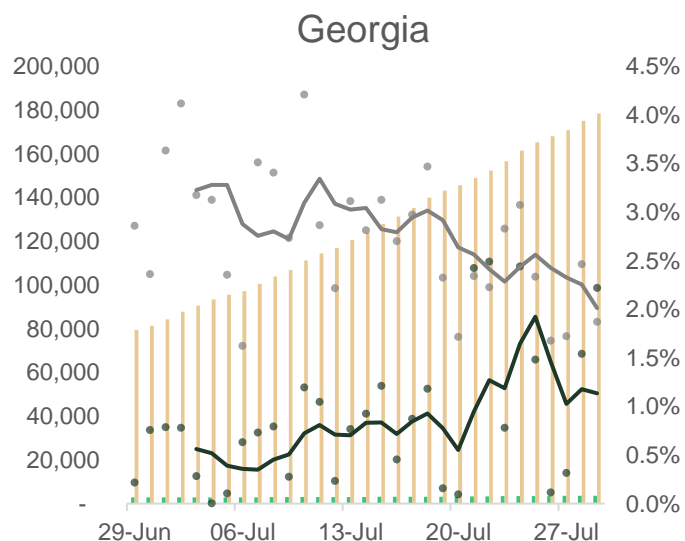
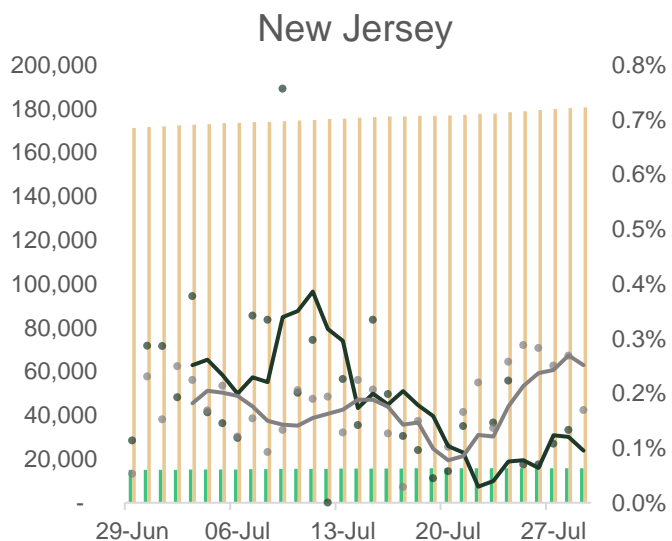
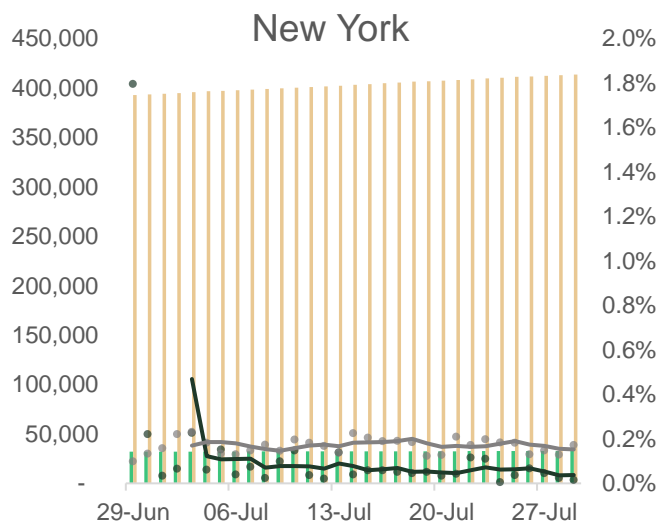
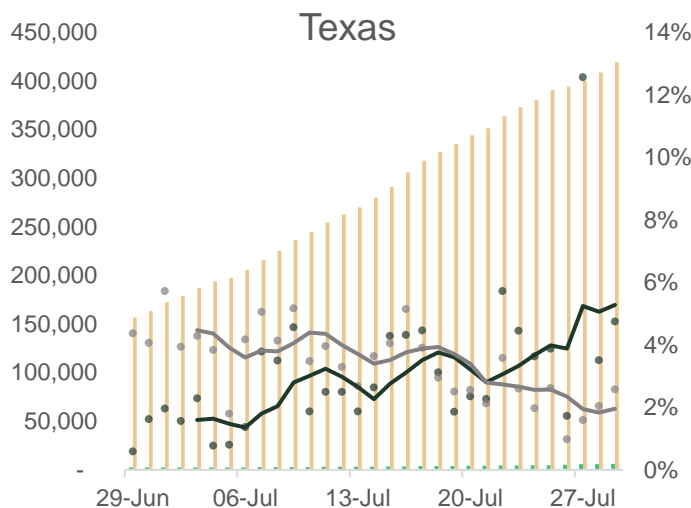
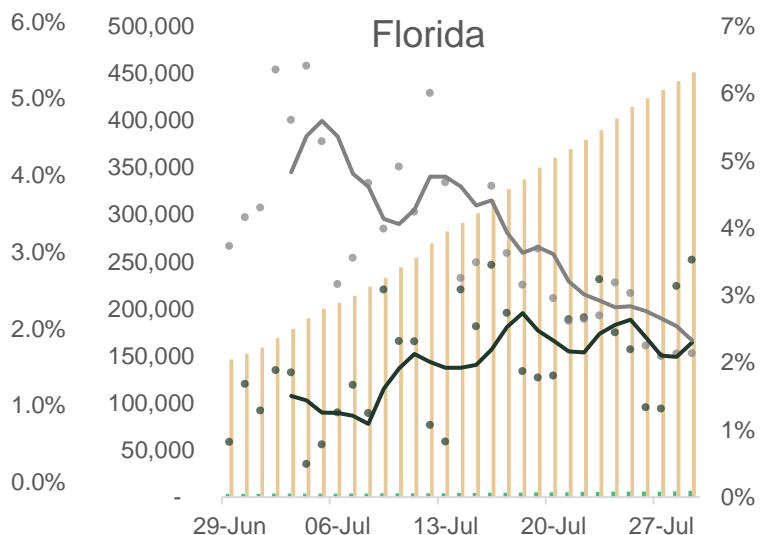
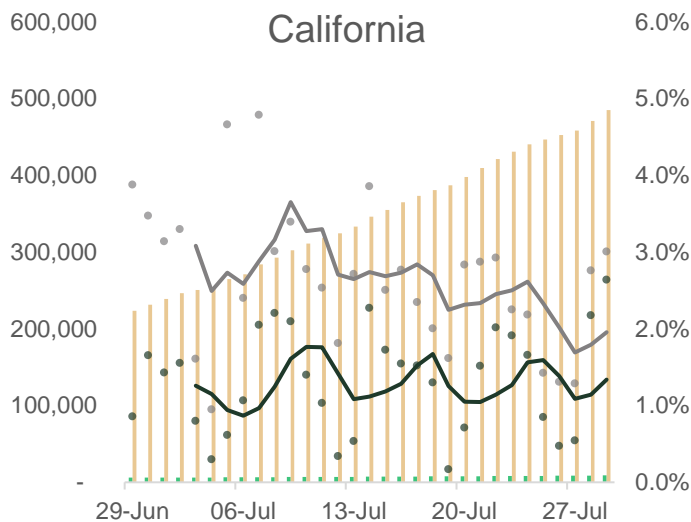
Source: JHU, MNI. All data correct as of 0640BST July 30, and represents full-day data submissions, rather than intra-day figures.

Chart Pack 1 – Short-Term COVID-19 Cases and Fatalities, Nominal and % Chg Day-to-Day (5dma) The chart pack below records the number of COVID-19 cases and fatalities resulting from COVID-19 recorded in key states over the past month in each respective state. The charts also display the rate of increase in recorded cases and fatalities in each state. **Legend below can be used for all state charts.**

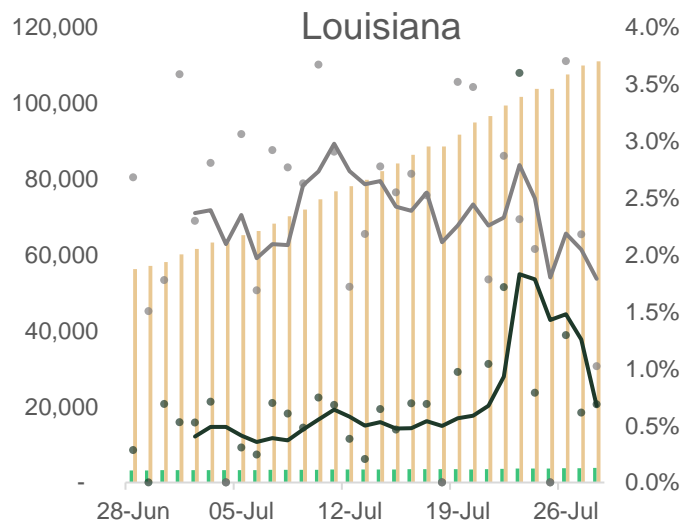
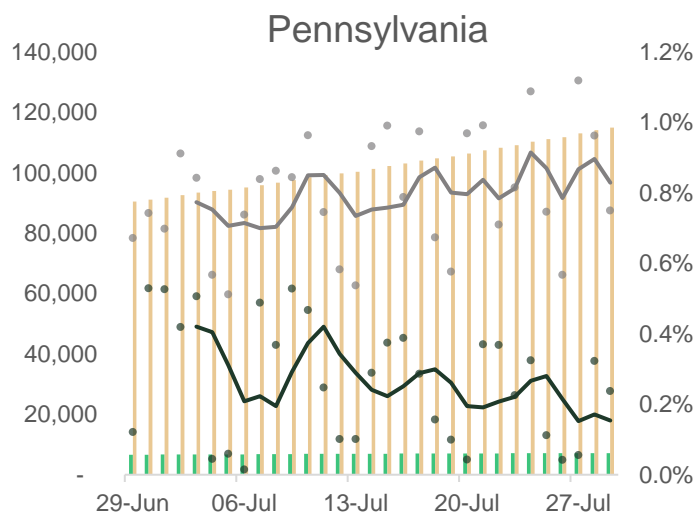
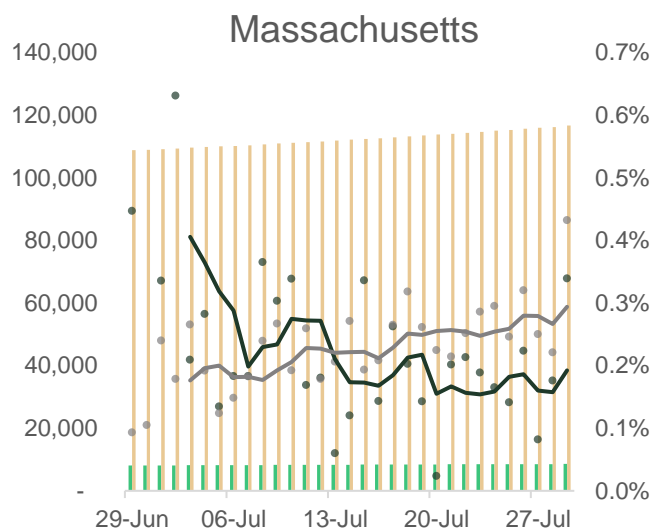
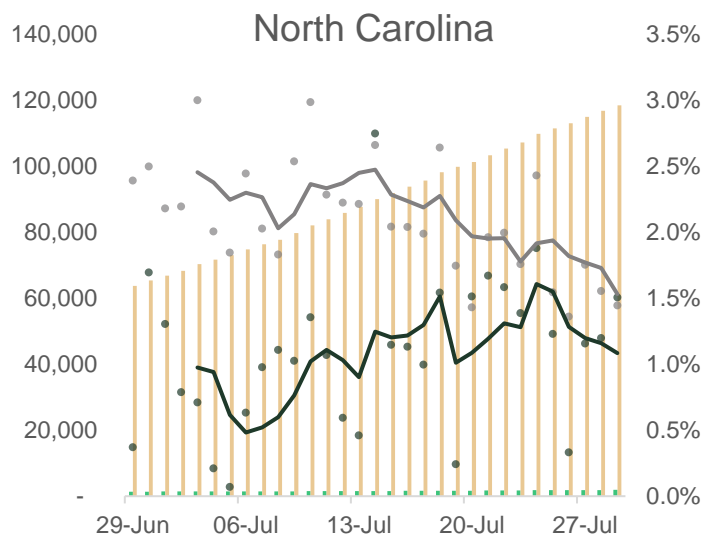
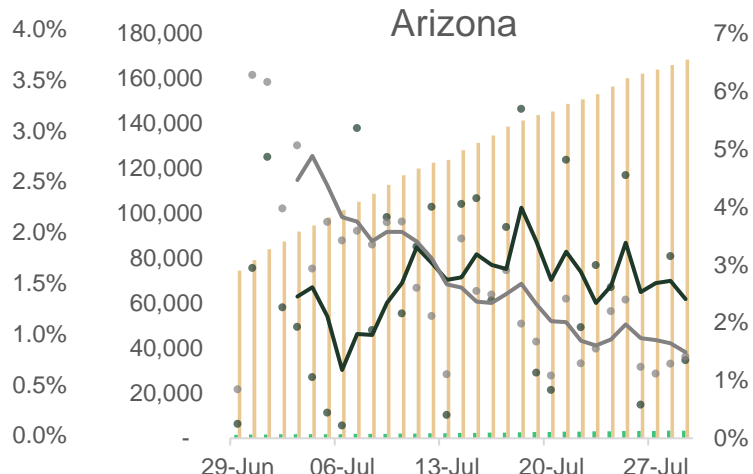
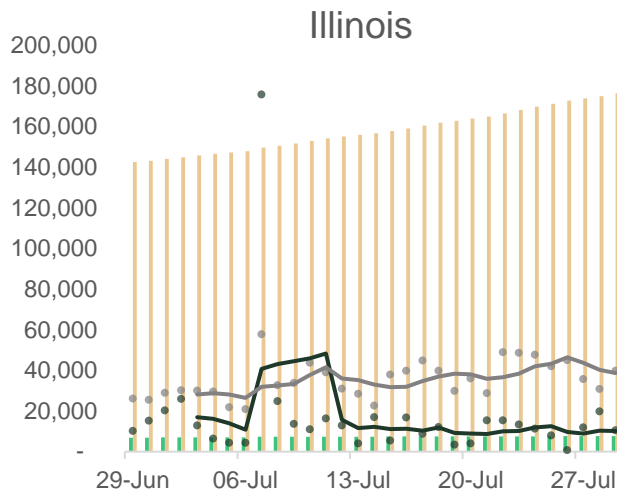


Source: JHU, MNI. N.b. Legend applies to all charts. All data correct as of 0640BST July 30, and represents full-day data submissions, rather than intra-day figures. Each dot indicates the data from a single day.

■ Total Fatalities (LHS) ■ Total Cases (LHS) — Fatalities, D-t-D % (RHS) — Cases, D-t-D % (RHS)



■ Total Fatalities (LHS) ■ Total Cases (LHS) — Fatalities, D-t-D % (RHS) — Cases, D-t-D % (RHS)



Source: JHU, MNI. N.b. Legend applies to all charts. All data correct as of 0640BST July 29, and represents full-day data submissions, rather than intra-day figures. Each dot indicates the data from a single day.

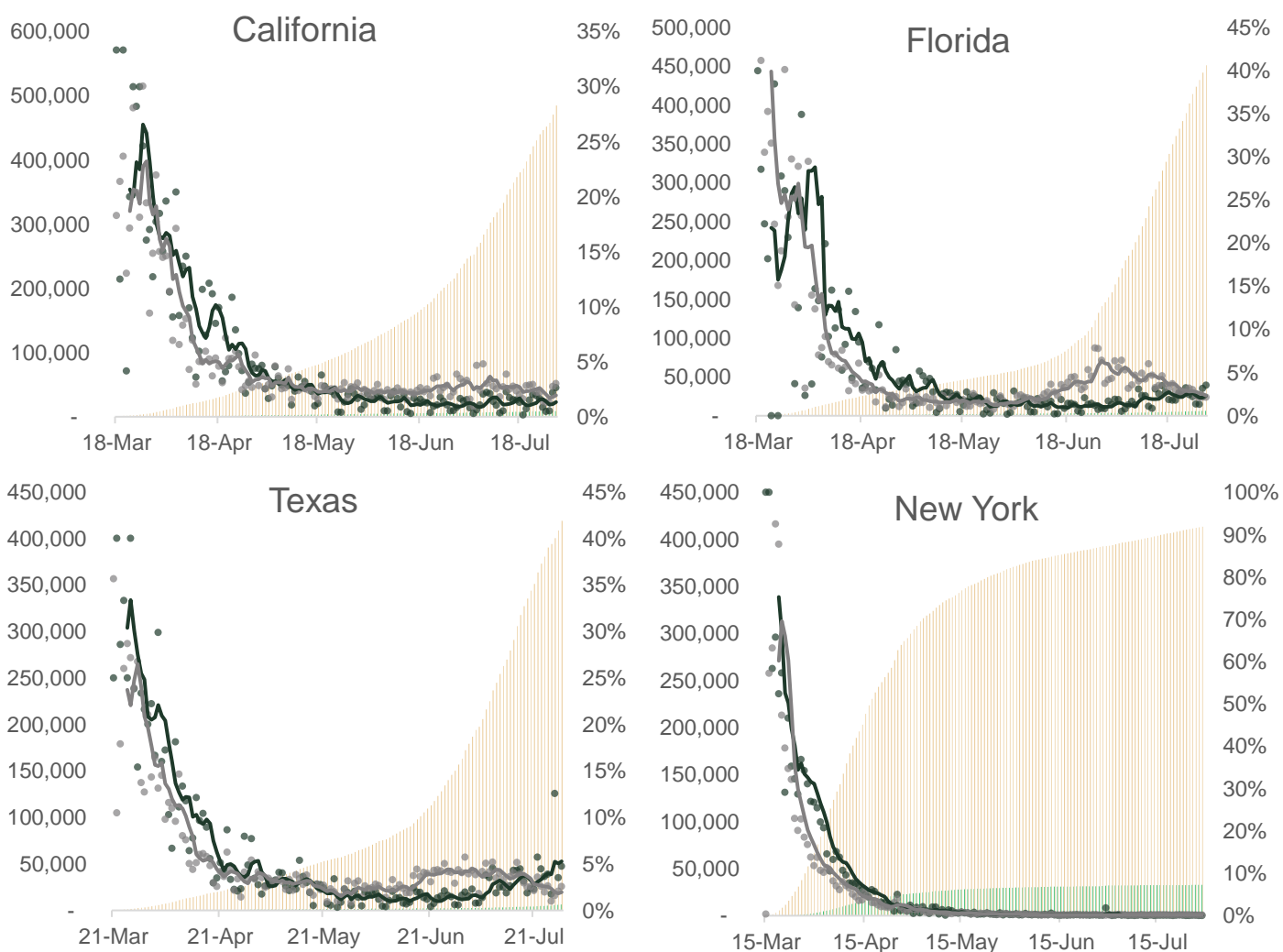
Table 2. Approximate Timings of COVID-19 Data Releases in Selected States

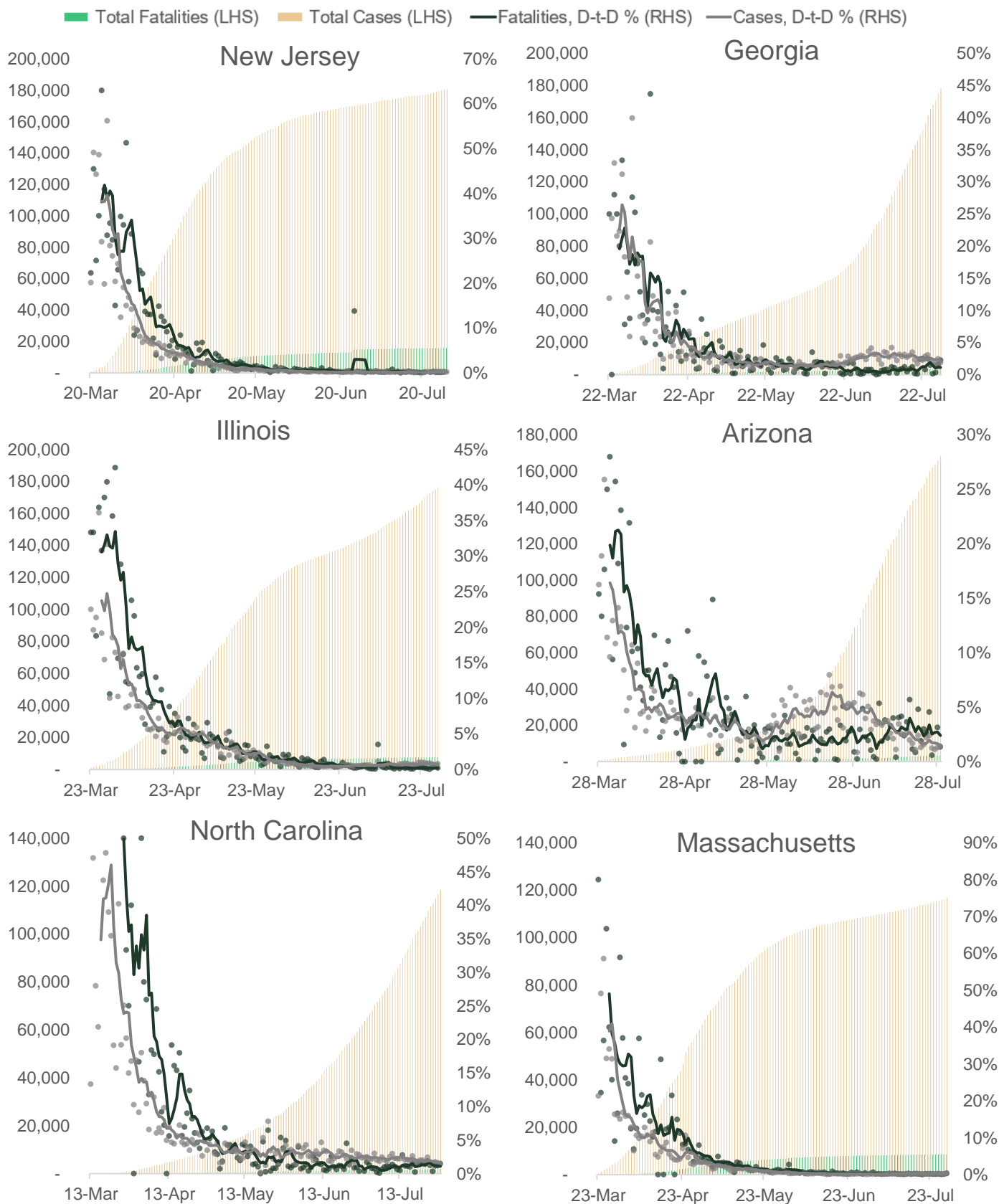
State	Time Range for Data Release (ET)	Time Range for Data Release (BST)
Arizona	1115-1130	1615-1630
California	1330-1345	1830-1845
Florida	1030-1045	1530-1545
Georgia	1430-1500	1930-2000
New Jersey	1245-1315	1745-1815
New York	1115-1145	1615-1645
North Carolina	By 1200	By 1700
Texas	1630-1700	2130-2200

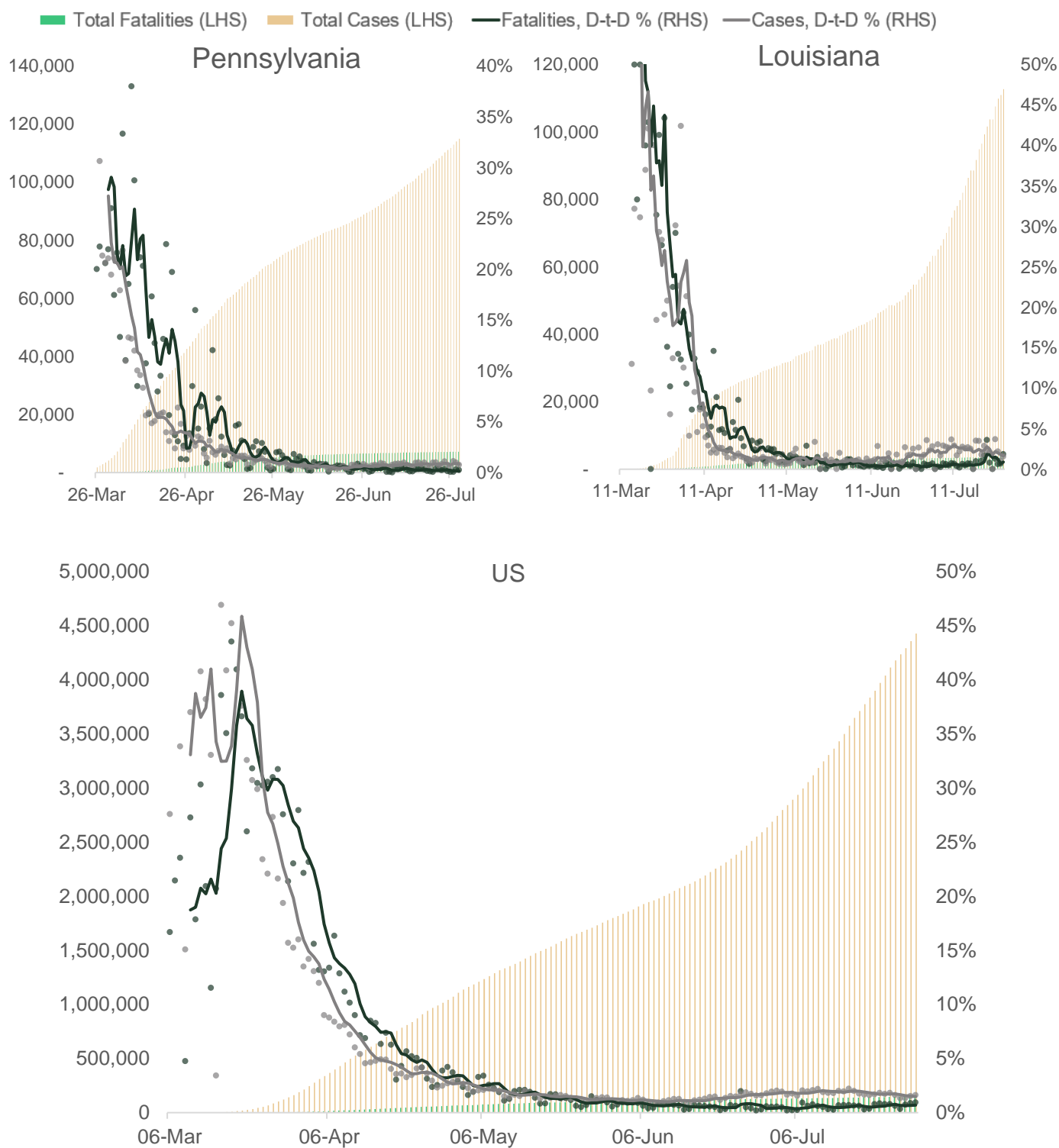
Source: MNI, State Health Departments, COVID Tracking Project. N.b. All timings subject to change or omission.

Chart Pack 2 – Long-Term COVID-19 Cases and Fatalities, Nominal and % Chg Day-to-Day (5dma) The chart pack below records the number of COVID-19 cases and fatalities resulting from COVID-19 recorded in key states since the start of the outbreak in each respective state. The charts also display the rate of increase in recorded cases and fatalities in each state. **Legend below can be used for all state charts .**

■ Total Fatalities (LHS) ■ Total Cases (LHS) —Fatalities, D-t-D % (RHS) —Cases, D-t-D % (RHS)

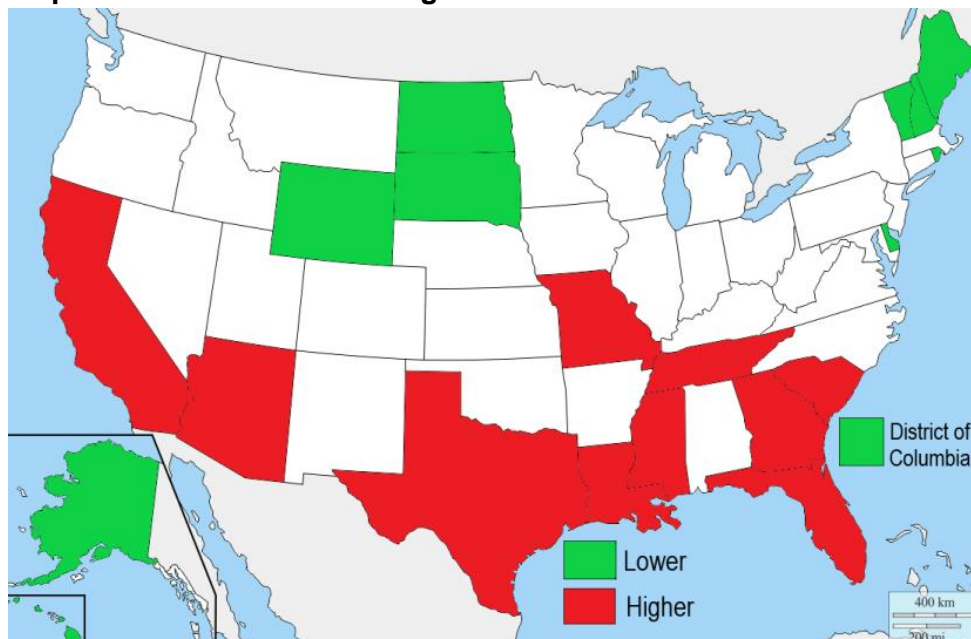






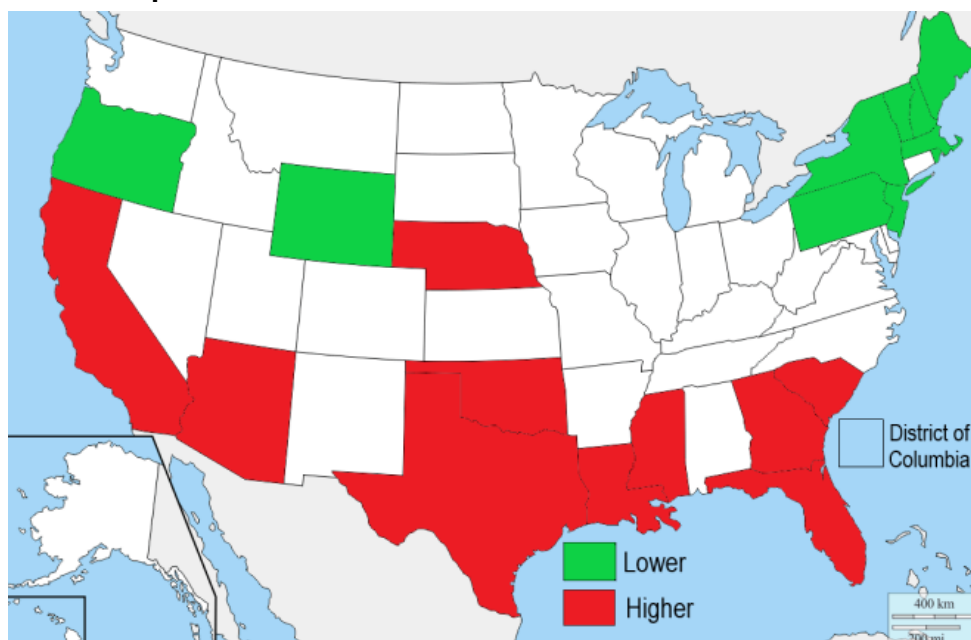
Source: JHU, MNI. N.b. Legend applies to all charts. All data correct as of 0640BST July 30, and represents full-day data submissions, rather than intra-day figures. Each dot indicates the data from a single day.

Chart 1. Map of US – States with 10 Highest and 10 Lowest Number of New Cases



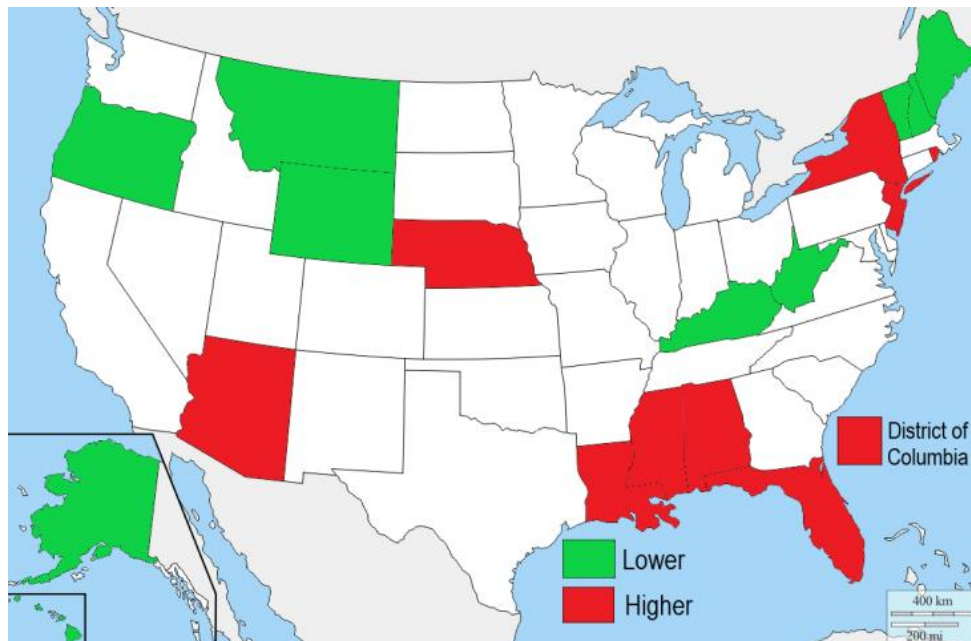
Source: JHU, MNI, D-Maps. Data for July 29. States with highest cases (in order): California, Texas, Florida, Georgia, Arizona, Tennessee, Missouri, South Carolina, Louisiana, Mississippi. States with lowest cases (in order): Vermont, New Hampshire, Maine, Wyoming, District of Columbia, Alaska, Rhode Island, North Dakota, Hawaii, Delaware, South Dakota.

Chart 2. Map of US – States with 10 Highest and 10 Lowest Number of New Cases Per Head of State's Population



Source: JHU, MNI, D-Maps. Data for July 29. States with highest cases per head (in order): Nebraska, Mississippi, Florida, Louisiana, Texas, California, South Carolina, Arizona, Georgia, Oklahoma. States with lowest cases per head (in order): Vermont, New Hampshire, Maine, New Jersey, New York, Pennsylvania, Wyoming, Rhode Island, Massachusetts, Oregon.

Chart 3. Map of US – States with 10 Highest and 10 Lowest Number of Total Recorded Cases Per 100 Head of State's Population



Source: JHU, MNI, D-Maps. Data for July 29. States with highest cases per head (in order): Nebraska, Louisiana, Arizona, New York, Florida, New Jersey, Mississippi, Rhode Island, Alabama, District of Columbia. States with lowest cases per head (in order): Hawaii, Vermont, Maine, Montana, West Virginia, Alaska, Oregon, Wyoming, New Hampshire, Kentucky.